



Facilitate Open Science Training for European Research

RESEARCH DATA MANAGEMENT AND OPEN DATA

6-7 October 2015
University of Manchester, UK



PUBLISH DATA

Veerle Van den Eynden, UK Data Service



UK Data Service



While research data is often exchanged in informal ways with collaborators and colleagues, formally publishing data brings many advantages. Data publishing has grown rapidly in recent years, and there are myriad places to do so. A significant advantage to formal publication is enabling formal citation and proper attribution.

Topics:

- Where to publish data
- Types of repository
- Data journals
- Citing data
- Persistent identifiers



Where can I share my data?

Discipline specific repositories and data centres

- dedicated to archiving, preserving and disseminating discipline specific digital data
- e.g. UK Data Archive/UK Data Service, Environmental Information Data Centre, Visual Arts Data Service, Endangered Language Archive.. (the list goes on)
- UK Data Service has many components:
 - main collection is actively curated but reserved for high impact data, primarily from government departments
 - ReShare = repository for self-deposit for most research data offered to UK Data Service

Where can I share my data?

Generic repositories

- Focus on sharing / publishing research data, often to support published papers
- e.g. Dryad, figshare, Zenodo
- Find a repository: [Re3data](#)

Where can I share my data?

Institutional repositories

- Many universities now have an institutional repository where researchers can put their research outputs
- Generally designed for articles/publications, but increasingly providing for datasets too
- e.g. Manchester University e-Scholar: www.escholar.manchester.ac.uk/, Edinburgh DataShare: <http://datashare.is.ed.ac.uk/>
- Jisc [UK Research Data Discovery Service project](#): develop a national registry for research data, which will include records from institutional repositories and national data centres

Where can I share my data?

Data journals

- a fairly new phenomenon, but growing
- publish a detailed journal style data article describing the data, how it was collected, reuse potential
- recommends or provides a place of deposit (repository)
- academic credit

Examples:

- [Journal of Open Public Health Data](#)
- [Journal of Open Psychology Data](#)
- [Scientific Data](#)



Citing data

- Citation a fundamental part of research and academia in general
- Just as articles are cited, data which has contributed to research should be cited
- Data citation:
 - fairly acknowledges the authors sources
 - promotes reproduction of research findings
 - makes it easier to find data for others who are interested
 - allows impact of data to be tracked
 - provides a structure that recognises and rewards data creators

Data citation conventions

- Being able to accurately cite data is dependent on high quality metadata
- Historically, data citation has tended to take form of an imprecise acknowledgement,
- Now publishers are adopting more formal conventions
- No one standard citation format has emerged
- But certain things can be identified as crucial for data in particular:
 - **The precise version of the dataset used e.g. edition number or release date info**
 - **Where to find the data i.e. a URL**
 - **Or even better, a persistent identifier (DOI)**



UK Data Service citation convention

- UK Data Service specifies that “All works which use or refer to these materials [the data collection] should acknowledge these sources by means of bibliographic citation”

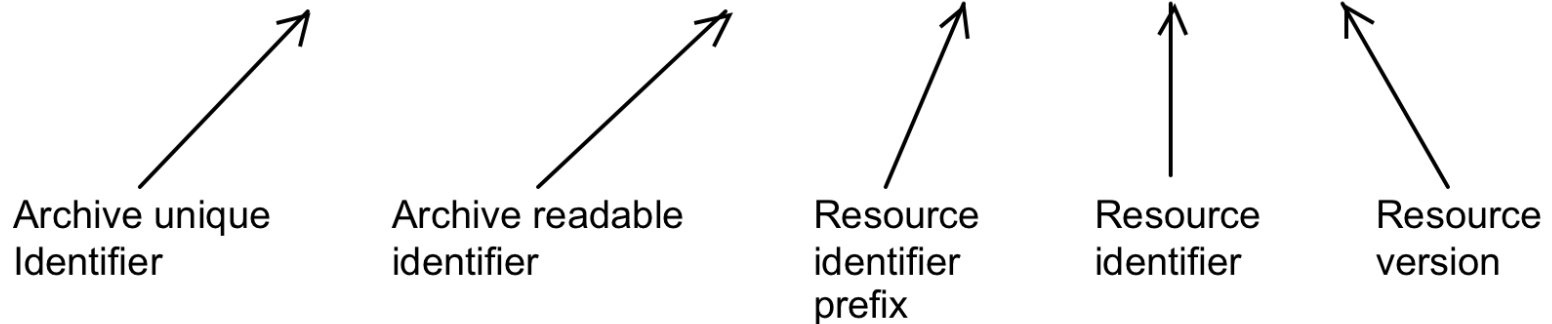
- Our format is:

University of Essex. Institute for Social and Economic Research and NatCen Social Research, *Understanding Society: Waves 1-3, 2009-2012* [computer file]. *5th Edition*. Colchester, Essex: UK Data Archive [distributor], November 2013. SN: 6614, <http://dx.doi.org/10.5255/UKDA-SN-6614-5>

- The last part of the above is a special type of URL called a Digital Object Identifier (DOI), a type of persistent identifier
- When you click on one of these, a third party looks up the DOI and points you to its current location
- Regardless of the data collection current online location, this URL will always allow you to find it - this is what makes it ‘persistent’

DOI at UK DATA ARCHIVE

10.5255/UKDA-SN-6732-1



UK Data Service data catalogue record for:

Understanding Society: Waves 1-2, 2009-2011

[Documentation](#) | [Related Studies](#) | [Publications](#)

 [Download/Order](#) | [Get f](#)

TITLE DETAILS

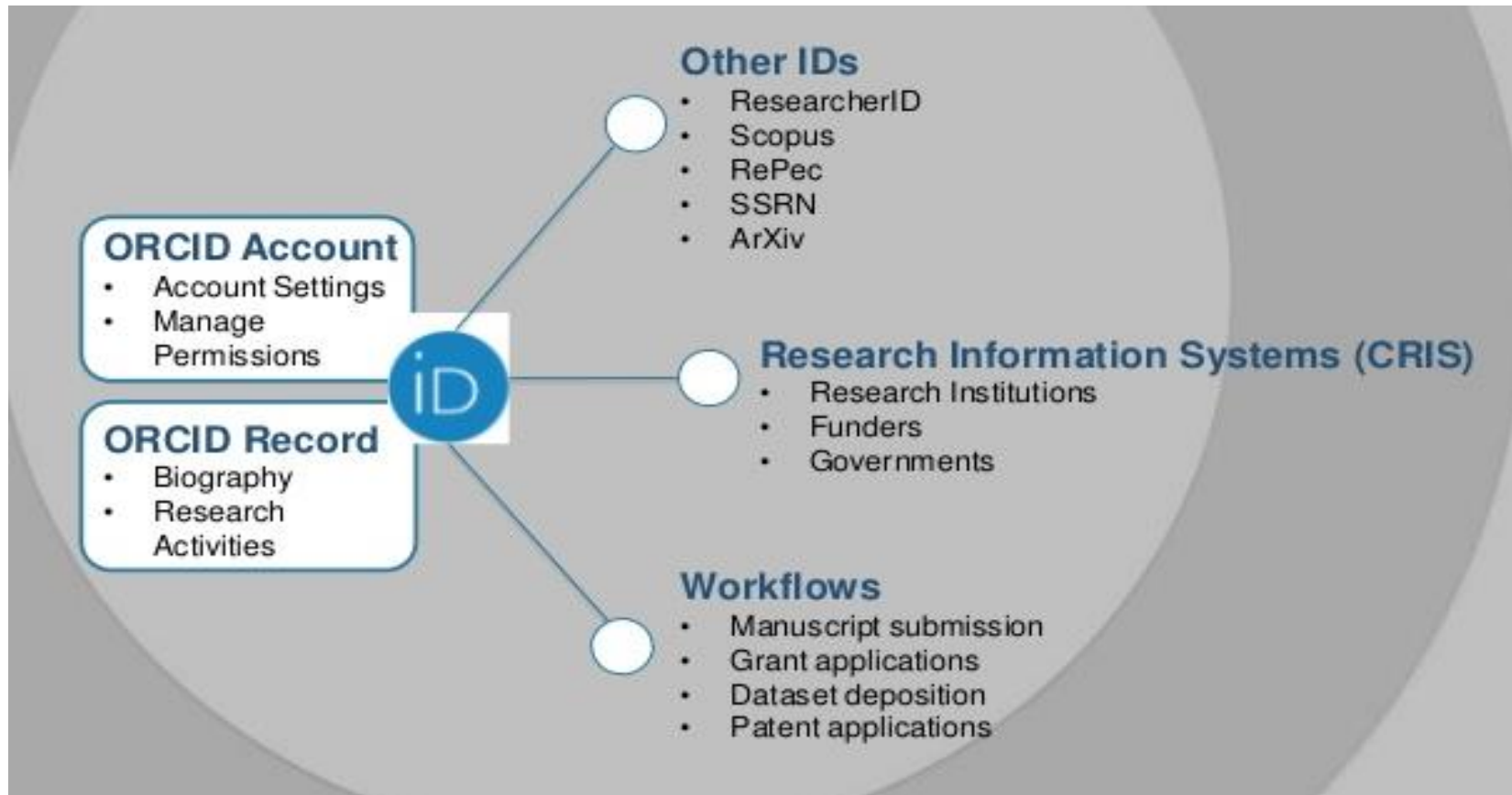
SN:	6614
Title:	Understanding Society: Waves 1-2, 2009-2011
Alternative title:	United Kingdom Household Longitudinal Study; UKHLS
Persistent identifier:	10.5255/UKDA-SN-6614-4
Series:	Understanding Society: Waves 1- , 2008-
Depositor:	University of Essex. Institute for Social and Economic Research
Principal investigator(s):	University of Essex. Institute for Social and Economic Research NatCen Social Research
Data collector(s):	NatCen Social Research Northern Ireland Statistics and Research Agency. Central Survey Unit
Sponsor(s):	Economic and Social Research Council Department for Work and Pensions Department for Education Department for Transport Department for Culture, Media and Sport

Connecting research and researchers

- Research in the digital realm is becoming increasingly linked up
- Leverage this to increase your profile
- Get an **ORCID** (Open Researcher and Contributor ID) and identify yourself as a unique researcher
- ORCID provides a persistent digital identifier that distinguishes you from every other researcher i.e. *that* Dr. John Smith
- Looks something like: <http://orcid.org/xxxx-xxxx-xxxx-xxxx>
- Simple and free to register at: <http://orcid.org/>



Link together your research



Source: [ORCID: Connecting Research and Researchers](#),

Biblioteca del Campus Terrassa on Jul 11, 2013

Demo - UK Data Service ReShare

- <http://reshare.ukdataservice.ac.uk/>
- A platform through which to get your research data published
- It's remote is primarily data produced by ESRC researchers, but also other social science research data of interest



ReShare Homepage


UK Data Service home Help About FAQ Contact

UK Data Service
ReShare

Home Legal Review procedures

ReShare

"Archiving and sharing research data"



LOGIN / REGISTER

DISCOVER UK DATA SERVICE

GO

Data Website

QUICK ACCESS TO

Deposit data collection

ReShare is the UK Data Service's online data repository, where researchers can archive, publish and share research data, as open or safeguarded data.

Collections of data and accompanying documentation can be submitted after registering with the UK Data Service. ReShare is where ESRC grant holders submit the data from their research grants, as a contractual requirement under the [ESRC research data policy](#). In the process related grant information can be retrieved from the [RCUK Gateway to Research](#). We [review](#) data before their release, to ensure they conform with ethical and legal requirements.


Search and find data via the UK Data Service's [Discover](#) portal.

OUR QUALITY MARK: EXEMPLAR DATA COLLECTIONS

Russell, Steven (2015). *Life on antiretroviral therapy: People's adaptive coping and adjustment to living with HIV as a chronic condition in Wakiso District, Uganda.*

Stephan, Andreas (2015). *Survey of public attitudes to price fixing and cartel enforcement in Britain, 2007.*

VIDEO: HOW TO DEPOSIT DATA IN THE RESHARE REPOSITORY



Easy to publish and upload data

Logged in as Louise Corti Logout UK Data Service home Help About FAQ Contact

UK Data Service
ReShare



My data

Home Legal Review procedures

Edit collection: [Data Collection #851515](#)

Terms and conditions → Award details → People → Data collection → Upload → Deposit

To deposit a data collection, you must accept the [ReShare Terms and Conditions](#).

- I confirm that I am the owner of the copyright and associated intellectual property rights in the whole Data Collection or am otherwise lawfully entitled to grant this licence on behalf of each and every owner;
- I grant a non-exclusive, royalty-free licence to the UK Data Archive (a department of the University of Essex and not a separate legal entity) of Wivenhoe Park, Colchester, CO4 3SQ (the "University") to hold, make copies of, and disseminate copies of the Data collection, in accordance with the access conditions I will specify when uploading data files: open data accessible to users without registration; or safeguarded data accessible to users registered with the data services provided by the UK Data Archive.

*** I agree to the ReShare data deposit terms and conditions**

Save for later Cancel Next >

ReShare in Discover



Discover

Variable and question bank

QualiBank

Type +

Subject +

Date +

Data type -

ReShare (15)

UK Survey data (177)

Qualitative and mixed methods data (34)

Cohort and longitudinal studies

Discover

Discover

Search and browse our data collections, support guides, case studies, and related publications.

Q Violence

GO

Reset filters

Clear search

Auto-complete

Map search to HASET thesaurus?

Help



Case study



Data collection



Series record



ESRC output



Support guide

Results per page: 10

Sorted by: Relevance

Displaying 1-10 of 15 results

1 2 >>>



SN 851150 *Investigating Adolescent Violence towards Parents*
Rachel Condry, University of Oxford

+ Full record...

Download | DDI XML | Similar data collections



SN 850417 *Contested development?: intimate partner violence and women's employment in urban and rural Tanzania*

Global Uncertainties: Security In an Africa of Networked, Multi-Level Governance

Leonard, David 2014. Global Uncertainties: Security In an Africa of Networked, Multi-Level Governance. [Data Collection]. Colchester, Essex: Economic and Social Research Council. <http://reshare.ukdataservice.ac.uk/id/eprint/851233>

The programme of research centres on how the various institutions responsible for the production of security and the management of conflict in Sub-Saharan African societies do, could and should evolve in response to the presence of violent conflict. These institutions include: the armed forces, police, courts (civil as well as criminal), 'traditional' institutions of local governance, elections (and other methods of choosing leadership), international organisations (such as the United Nations, African Union, UN High Commission for Refugees, the World Court,), and the community of international donor nations. The programme is built on the observation that all governance (especially in Africa) is multi-leveled and networked - from the village to the international organisation, and well beyond what is specified in formal government structures. Thus the focus will be not only on the ways in which key conflict-management institutions evolve themselves but also on the changing ways in which the networks in which they are embedded actually operate. This leading edge research challenges theories about the state, state formation, and sovereignty as well as the dynamics of violent conflict as presented in the dominant current work on Africa. The primary methods of research will be network analysis and qualitative interviewing.

Creators:	Creator Name	Email	Affiliation	ORCID
	Leonard, David	Unspecified	Institute of Development Studies	Unspecified
Research funders:	Economic and Social Research Council			
Grant reference:	RES-071-27-0048			
Subjects:	Law, crime and legal systems Politics			
Date deposited:	31 Jan 2014 19:00			
Last modified:	22 Oct 2014 19:27			

+ Coverage and Methodology

+ Access and Administration

— Coverage and Methodology

Collection period:	Date from: 1 April 2009	Date to: 31 March 2013
Country:	Sierra Leone	
Data collection method:	Group interviews in 39 villages and towns in rural Sierra Leone	
Observation unit:	Groups	
Kind of data:	Alpha-numeric, Textual	
Type of data:	Qualitative and mixed methods data	
Resource language:	English	

— Access and Administration

Data sourcing, processing and preparation: Citizen interviews

Copyright holders:	Name	Email	Affiliation	ORCID
	Leonard, David	Unspecified	Institute of Development Studies	Unspecified
	,	Unspecified	Unspecified	Unspecified

Contact:	Name	Email	Affiliation	ORCID
	Leonard, David	leonard@berkeley.edu	Institute of Development Studies	Unspecified

Notes on access: The names of individual respondents have been removed from the data set.

Publisher: Economic and Social Research Council

Last modified: 22 Oct 2014 19:27

AVAILABLE FILES

Data

– Security_%26_Networks.xlsx

Accessible to:	Registered users only (safeguarded data)
File or bundle content:	Data
File or bundle description:	Security & Networks
File format:	application/octet-stream
License:	UK Data Service End User Licence
File size:	10Kb

+ Sierra_Leone_Security_%26_Networks__Coded.xls

+ Copy_of_Somalia_SC_peace_initiatives.xlsx

Documentation

– [Sierra_Leone_methods.doc](#)

Accessible to:	Anyone (open data)
File or bundle content:	Documentation
File or bundle description:	Sierra Leone methods
File format:	application/msword
License:	UK Data Service End User Licence
File size:	64Kb

RELATED RESOURCES

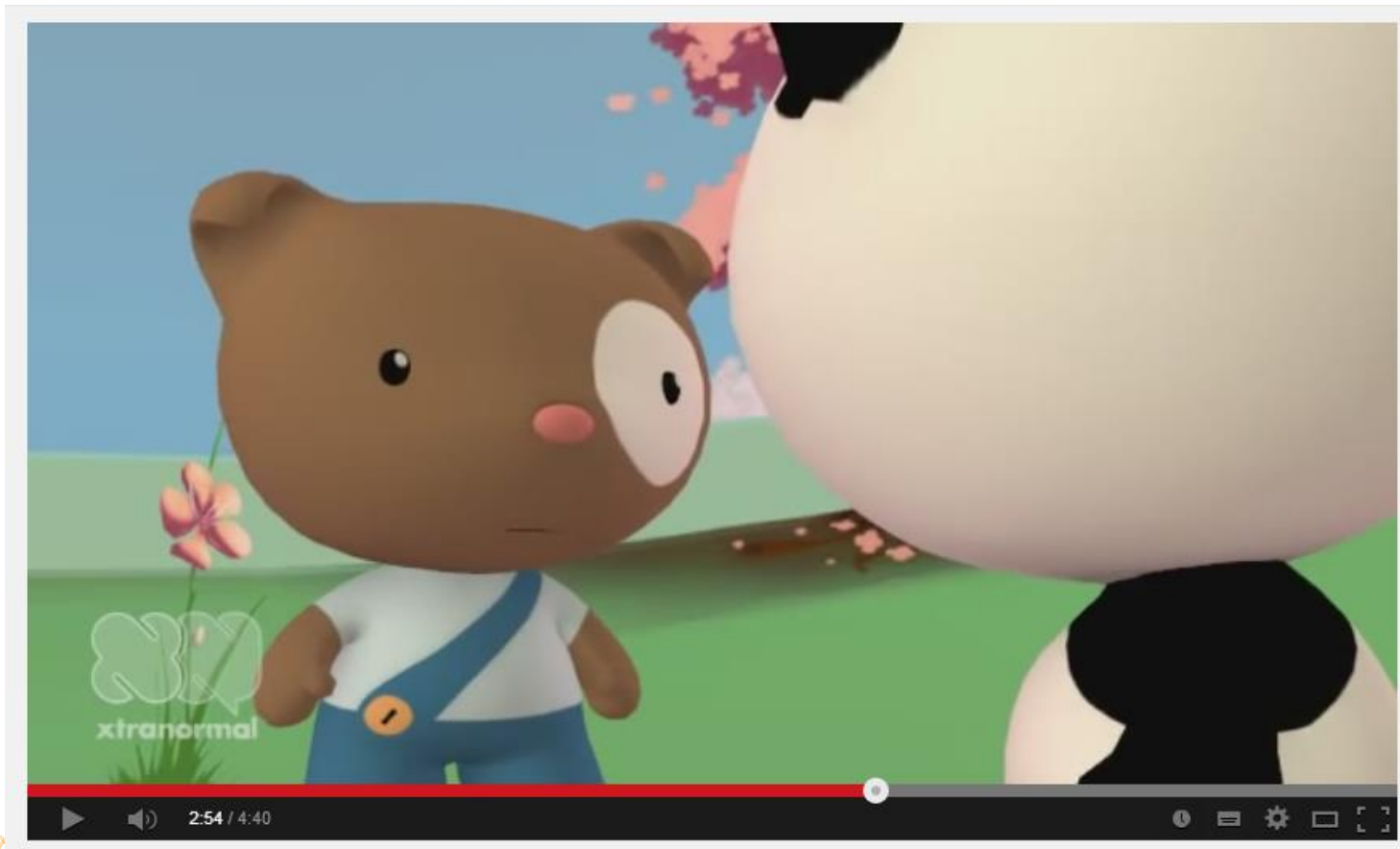
Website

Project outputs and publications

Data Sharing and Management Snafu in 3 Short Acts

Karen Hanson, Alisa Surkis and Karen Yacobucci, [NYU Health Sciences Library](https://www.nyu.edu/health-science-library/)

https://www.youtube.com/watch?v=66oNv_DJuPc



Exercise

Evaluate how data repositories disseminate and publish their data collections.

Use the repository portal or search/browse area to find data on a topic of interest.

- UK Data Service: <http://discover.ukdataservice.ac.uk/>
- Dataverse: <http://dvn.iq.harvard.edu/dvn/>
- DANS: <http://www.dans.knaw.nl/en>
- Journal of Open Psychology Data
<http://openpsychologydata.metajnl.com>
- Edinburgh DataShare: <http://datashare.is.ed.ac.uk/>
- Zenodo: <https://zenodo.org/>

Consider:

- How easy and intuitive is the system?
- How easy was it to find data?
- How was the metadata for the data collection exposed and used?
Did the metadata give enough information to understand the data content?
- Can anyone download the data or are there conditions attached?
- What is the repository's data use agreement?
- Are there restricted/confidential data in the repository?

